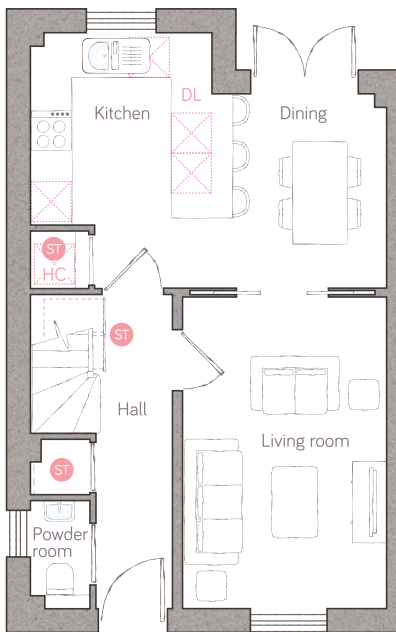




# orchard lane

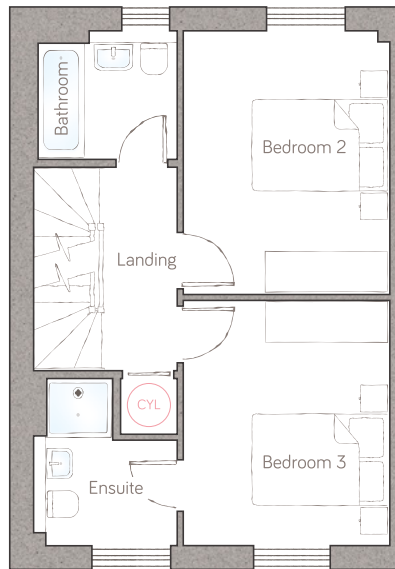
CRAFT COLLECTION • 3 BED, 3 BATH

A sumptuous 3-bedroom home that's beautifully designed for modern family life. It boasts as many bathrooms as bedrooms, plus a stunning master suite on the whole of the top floor, just perfect for teenagers or visiting relatives.



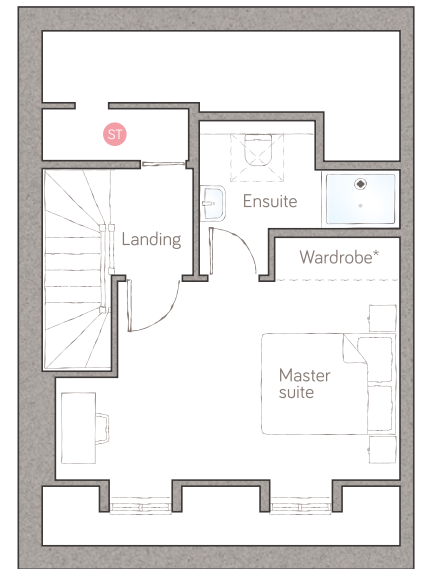
ground floor

kitchen/dining	5.26m x 3.77m (17' 2" x 12' 3")
living room	3.02m x 4.62m (9' 9" x 15' 1")
powder room	0.87m x 1.60m (2' 1" x 5' 3")



first floor

bedroom 2	3.04m x 3.90m (10' 0" x 12' 9")
bathroom	2.05m x 1.90m (6' 8" x 6' 2")
bedroom 3	3.04m x 3.62m (10' 0" x 11' 8")
ensuite	2.12m x 2.46m max (6' 11" x 8' 1" max)



second floor

master suite	5.07m x 3.62m (16' 6" x 11' 9")
ensuite	2.96m max x 2.27m max (9' 8" max x 7' 5" max)

ST Storage DL Demi-larder HC Housekeeper's cupboard Appliance Air source heat cylinder  
Plots 98, 104, 125, 127 & 129 as shown. Plots 99, 105, 126, 128 & 130 are handed.

\*Available as an upgrade.  
For illustrative purposes only. Specifications & layouts correct at time of print and are subject to change.

**bunnyhomes**

Old Callywith Road, Bodmin, Cornwall PL31 2GT  
bunnyhomes.com 01208 244971