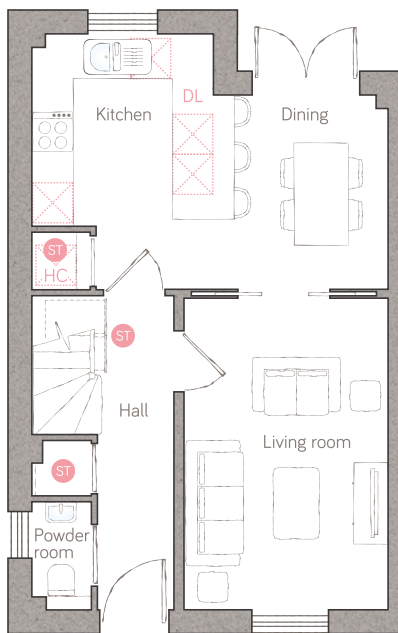




# orchard lane

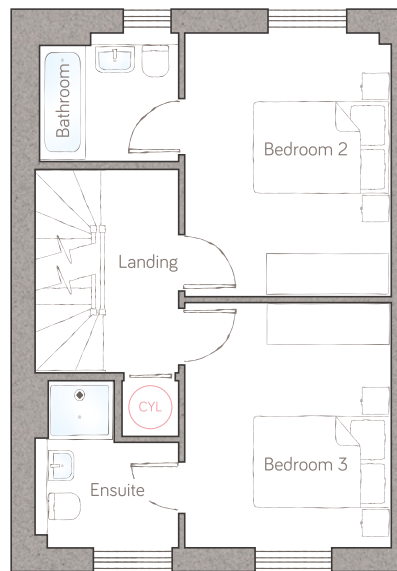
CRAFT COLLECTION • 3 BED, 3 BATH

A sumptuous 3-double bedroom, 3-bathroom home that's beautifully designed for modern family life. Set across 3 storeys, its super-flexible layout allows you to use the space in the way that works for you.



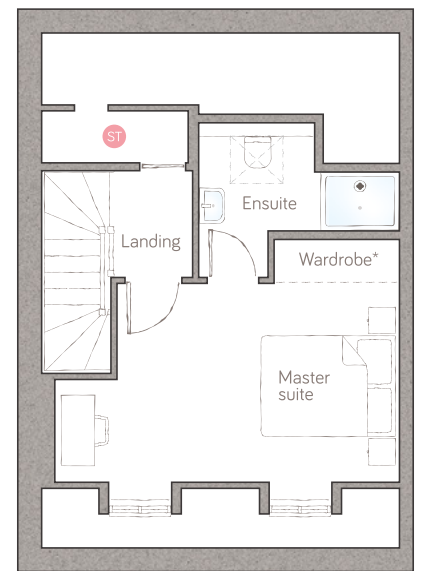
ground floor

|                |                                 |
|----------------|---------------------------------|
| kitchen/dining | 5.26m x 3.77m (17' 2" x 12' 3") |
| living room    | 3.02m x 4.62m (9' 9" x 15' 1")  |
| powder room    | 0.87m x 1.60m (2' 1" x 5' 3")   |



first floor

|           |  |
|-----------|--|
| bedroom 2 | 3.04m x 3.90m (10' 0" x 12' 9")        |
| bathroom  | 2.05m x 1.90m (6' 8" x 6' 2")          |
| bedroom 3 | 3.04m x 3.62m (10' 0" x 11' 8")        |
| ensuite   | 2.12m x 2.46m max (6' 11" x 8' 1" max) |



second floor

|              |   |
|--------------|---|
| master suite | 5.07m x 3.62m (16' 6" x 11' 9")               |
| ensuite      | 2.96m max x 2.27m max (9' 8" max x 7' 5" max) |

ST Storage DL Demi-larder HC Housekeeper's cupboard Appliance CYL Air source heat cylinder  
Plot 16.

\*Available as an upgrade.  
For illustrative purposes only. Specifications & layouts correct at time of print and are subject to change.