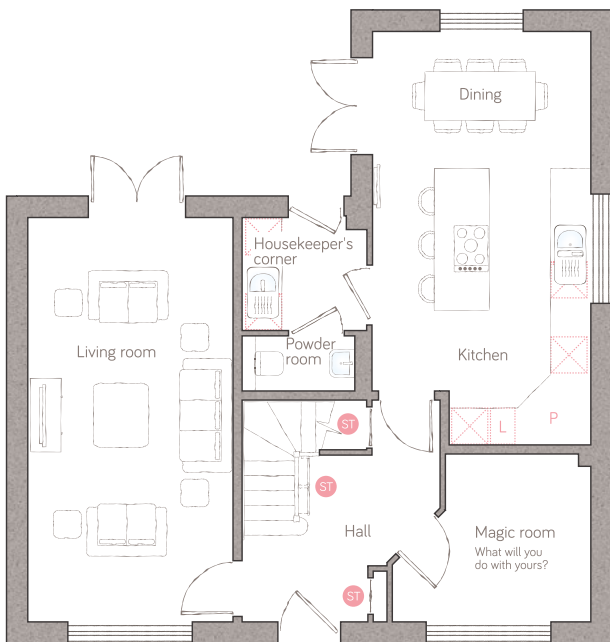




the old parsonage

CRAFT COLLECTION • 4 BED, 3 BATH

This grand, double-fronted, 4-bedroom, 3-bathroom home first welcomes you into a beautiful galleried hallway. It boasts two ensuites and a family bathroom upstairs, as well as a powder room downstairs and it features not one, but two sets of classic double doors onto the garden from both the large double aspect lounge and the dazzling island kitchen.



ground floor



first floor

| | | | |
|--------------------|----------------------------------|-----------------------------|---------------------------------|
| kitchen | 3.56m x 4.50m (11' 8" x 14' 9") | magic room | 3.23m x 2.74m (10' 7" x 8' 11") |
| dining | 3.56m x 2.24m (11' 8" x 7' 4") | powder room | 1.84m x 0.90m (6' 0" x 2' 11") |
| living room | 3.35m x 6.60m (10' 11" x 21' 7") | housekeeper's corner | 1.84m x 2.03m (6' 06" x 6' 8") |

| | | | |
|-------------------|----------------------------------|------------------|--|
| master bed | 3.18m x 3.91m (10' 5" x 12' 10") | ensuite | 2.13m x 1.73m max (7' 0" x 5' 8" max) |
| bedroom 2 | 3.56m x 3.24m (11' 8" x 10' 7") | ensuite 2 | 2.55m max x 2.08m max (8' 4" max x 6' 10" max) |
| bedroom 3 | 3.41m x 2.60m (11' 2" x 8' 6") | bathroom | 2.55m max x 2.17m (8' 4" max x 7' 1") |
| bedroom 4 | 2.55m x 2.45m (8' 4" x 8' 0") | | |

ST Storage L Dynamic larder P Pantry A Appliance CYL Air source heat cylinder
Plot 2.

*Available as an upgrade.
For illustrative purposes only. Specifications & layouts correct at time of print and are subject to change.