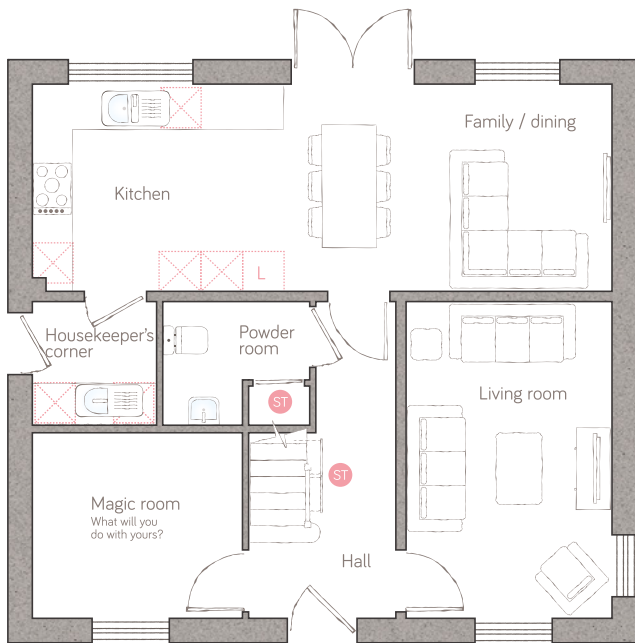




ivy house

CRAFT COLLECTION • 4 BED, 2 BATH

With a huge family kitchen, dining and casual sitting area running the whole width of the house, this superb 4-bedroom family home offers future-proofed, flexible living space that can grow with you. There are multiple reception rooms, a galleried landing and lots of practical storage too.



ground floor

kitchen	3.70m x 3.04m (12' 1" x 9' 11")	magic room	3.08m x 2.72m (10' 1" x 8' 11")
family/dining	4.81m x 3.04m (15' 9" x 9' 11")	powder room	2.16m x 1.81m (7' 1" x 5' 11")
living room	3.02m x 4.65m (9' 11" x 15' 3")	housekeeper's corner	1.82m x 1.81m (5' 11" x 5' 11")



first floor

master bedroom	3.08m x 4.48m (10' 1" x 14' 8")	ensuite	2.16m max x 2.20m max (7' 1" max x 7' 2" max)
bedroom 2	3.04m x 3.26m (10' 0" x 10' 8")	bedroom 4	3.05m max x 2.68m max (10' 0" max x 8' 9" max)
bedroom 3	3.08m x 2.74m (10' 1" x 9' 0")	bathroom	1.90m x 2.20m (6' 2" x 7' 2")

ST Storage L Dynamic larder LC Linen closet APpliance CYL Air source heat cylinder
Plots 1 & 12

For illustrative purposes only. Specifications & layouts may be subject to change.
*Wardrobes in bedrooms 2 & 3 are available as an upgrade.