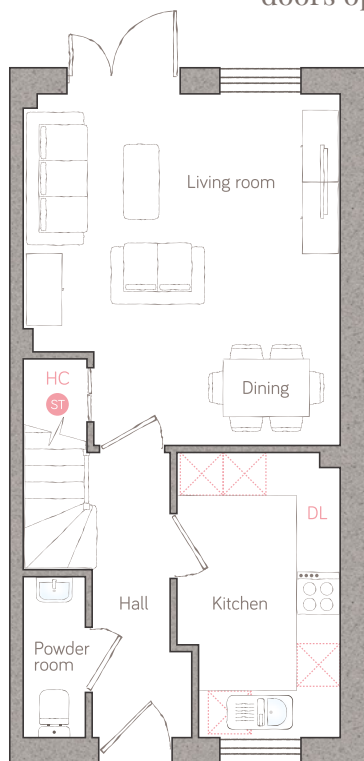




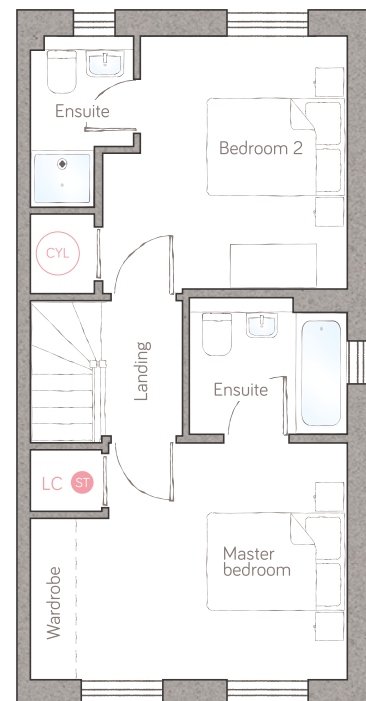
apple cottage

CRAFT COLLECTION • 2 BED, 2 BATH

This perfectly proportioned 2-bedroom semi-detached home is laid out for laid-back living. Enjoy cosy underfloor heating throughout the downstairs, a well-spec'd kitchen and a generous lounge/diner with doors opening out onto the garden beyond.



ground floor



first floor

kitchen 2.27m x 3.97m (7' 5" x 13' 0") powder room 0.87m x 2.24m (2' 10" x 7' 4")
 living/dining 4.42m x 4.90m (14' 6" x 16' 1")

master bedroom 4.42m x 3.29m (14' 6" x 10' 9") ensuite 2.20m x 1.90m (7' 2" x 6' 2")
 bedroom 2 3.40m x 3.52m (11' 2" x 11' 6") ensuite 2 1.45m x 2.39m (4' 9" x 7' 10")

ST Storage DL Demi-larder HC Housekeeper's cupboard LC Linen closet [Appliance] [Air source heat cylinder]
 Plot 15

For illustrative purposes only. Specifications & layouts may be subject to change.

bunnyhomes

Bramble Lane, Kilkhampton, Bude EX23 9FR
 bunnyhomes.com 01288 696080