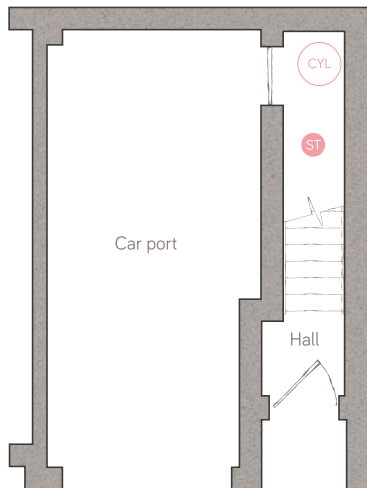




# carriage house

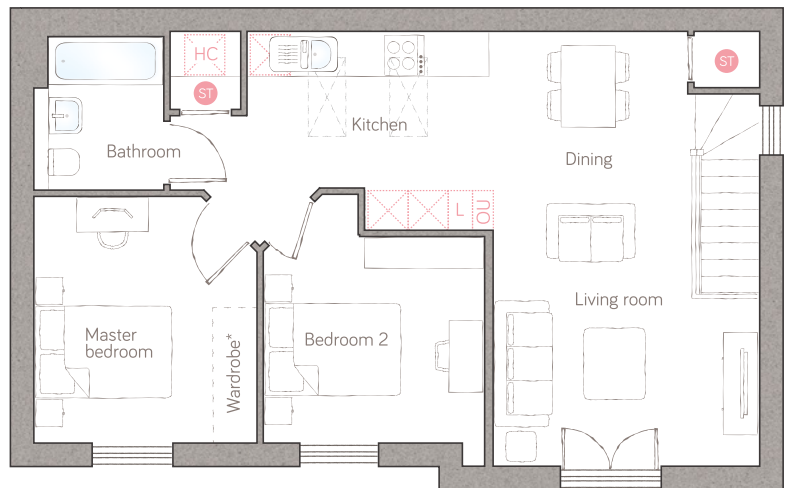
CRAFT COLLECTION • 2 BED, 1 BATH

A perfectly planned 2-bedroom apartment with its own elegant entrance and a cool, modern open plan kitchen / dining / living area, it makes for a great start to life or an ideal downsize solution complete with car port and parking.



ground floor

car port 3.15m x 6.60m (10' 3" x 21' 6")



first floor

kitchen	3.61m x 2.92m (11' 10" x 9' 7")	bedroom 2	3.25m x 3.02m (10' 8" x 9' 11")
living/dining	3.91m x 6.37m (12' 10" x 20' 11")	bathroom	1.90m x 2.32m (6' 2" x 7' 7")
master bedroom	3.27m x 3.62m (10' 9" x 11' 10")		

ST Storage L Dynamic larder OU Open unit HC Housekeeper's cupboard A Appliance CH Air source heat cylinder  
 Plot 27 as shown. Plot 26 is handed.

\*Available as an upgrade.

For illustrative purposes only. Specifications & layouts correct at time of print and are subject to change.

**bunnyhomes**

Old Callywith Road, Bodmin, Cornwall PL31 2GT  
 bunnyhomes.com 01208 244971