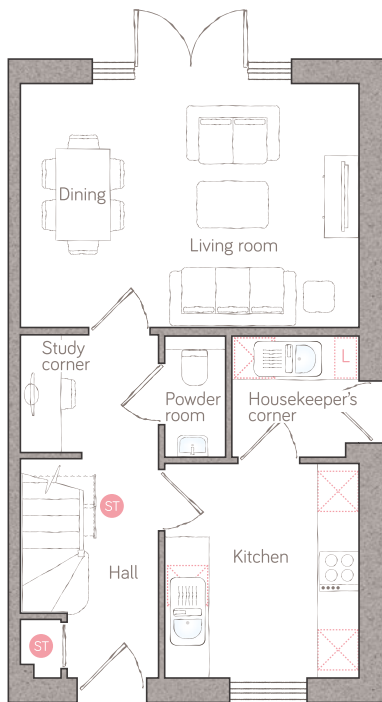




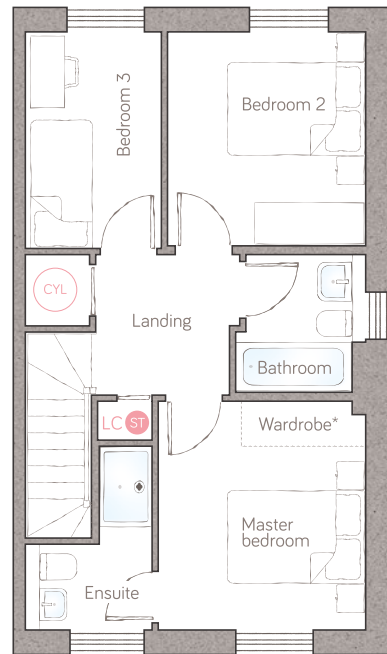
rose cottage

CRAFT COLLECTION • 3 BED, 2 BATH

A delightful 3-bedroom home that's packed with well-considered features, such as a study corner, a built-in hall cupboard and understairs storage. The living/dining room is bathed in light, with tall windows and classic double doors onto the garden and the master bedroom boasts an ensuite.



ground floor



first floor

living/dining 4.98m x 3.57m (16' 4" x 11' 8") powder room 0.90m x 1.78m (2' 11" x 5' 9")
 kitchen 2.85m x 3.16m (9' 4" x 10' 4") housekeeper's corner 1.86m x 1.78m (6' 1" x 5' 10")

master bedroom 3.03m x 3.35m (9' 11" x 11' 0") bedroom 2 2.89m x 3.12m (9' 6" x 10' 2")
 ensuite 1.66m x 2.67m max (5' 5" x 8' 9" max) bedroom 3 2.00m x 3.16m (6' 6" x 10' 4")
 bathroom 1.90m x 2.02m (6' 2" x 6' 7")

ST Storage L Dynamic larder LC Linen closet APpliance CYL Air source heat cylinder
 Plot 4.

*Available as an upgrade.
 For illustrative purposes only. Specifications & layouts correct at time of print and are subject to change.