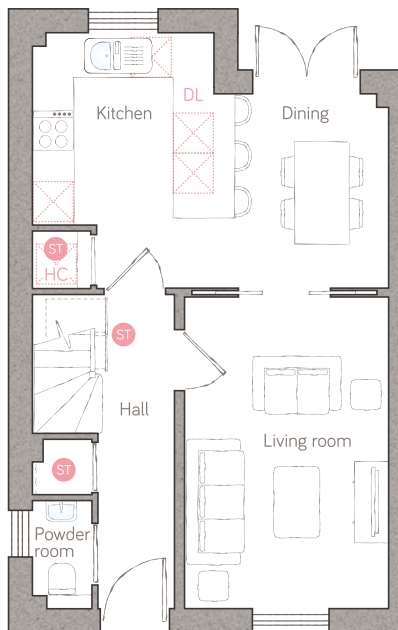




orchard lane

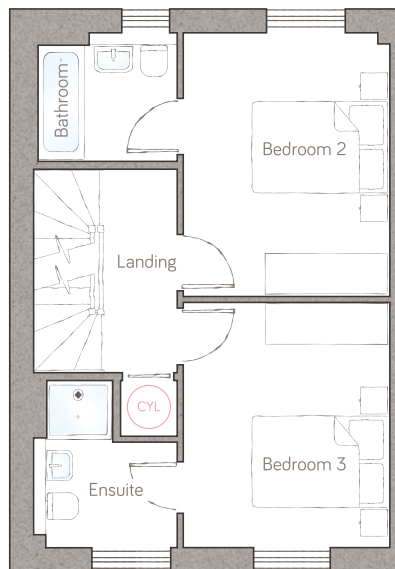
CRAFT COLLECTION • 3 BED, 3 BATH

A sumptuous 3-double bedroom, 3-bathroom home that's beautifully designed for modern family life. Set across 3 storeys, its super-flexible layout allows you to use the space in the way that works for you.



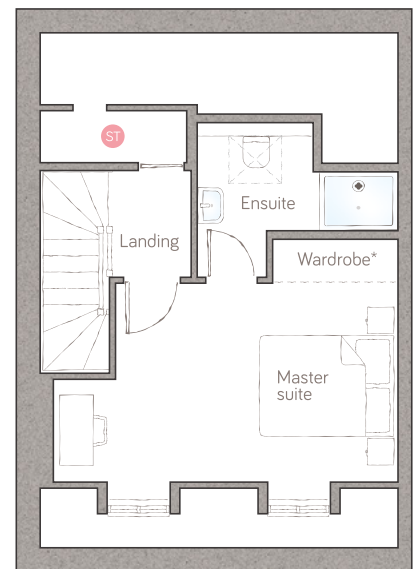
ground floor

kitchen/dining	5.26m x 3.77m (17' 2" x 12' 3")
living room	3.02m x 4.62m (9' 9" x 15' 1")
powder room	0.87m x 1.60m (2' 1" x 5' 3")



first floor

bedroom 2	3.04m x 3.90m (10' 0" x 12' 9")
bathroom	2.05m x 1.90m (6' 8" x 6' 2")
bedroom 3	3.04m x 3.62m (10' 0" x 11' 8")
ensuite	2.12m x 2.46m max (6' 11" x 8' 1" max)



second floor

master suite	5.07m x 3.62m (16' 6" x 11' 9")
ensuite	2.96m max x 2.27m max (9' 8" max x 7' 5" max)

ST Storage DL Demi-larder HC Housekeeper's cupboard Appliance Air source heat cylinder
Plots 98, 104, 125, 127 & 129 as shown. Plots 99, 105, 126, 128 & 130 are handed.

*Available as an upgrade.
For illustrative purposes only. Specifications & layouts correct at time of print and are subject to change.

bunnyhomes

Old Callywith Road, Bodmin, Cornwall PL31 2GT
bunnyhomes.com 01208 244971