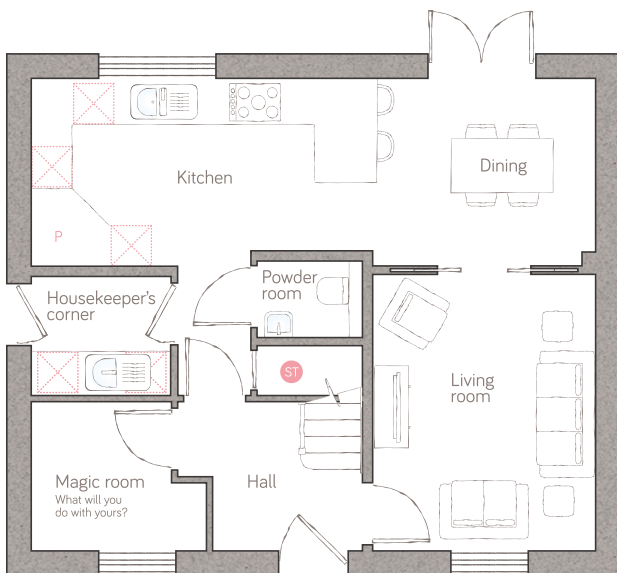




# the granary

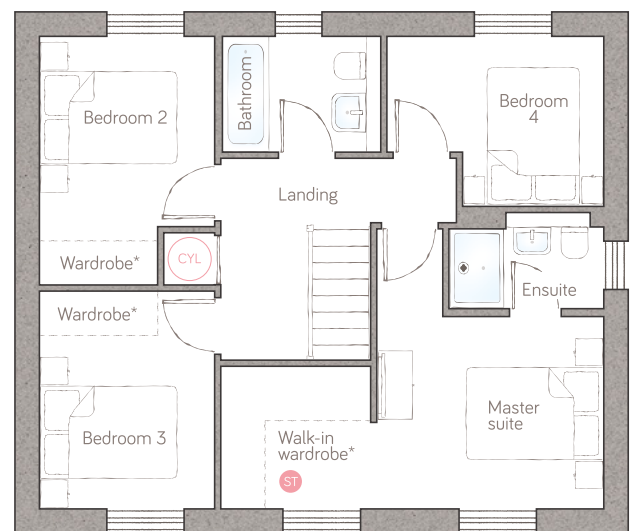
CRAFT COLLECTION • 4 BED, 2 BATH

A beautiful 4-double bedroom home that delivers so much adaptable space. The modern, open plan kitchen diner can flow freely into the lounge and has classic double doors to the garden. The hotel-style master suite boasts a fabulous walk-in wardrobe space.



ground floor

<b>kitchen</b>	5.08m x 2.76m (16' 8" x 9' 0")	<b>magic room</b>	2.57m x 2.19m (8' 4" x 7' 1")
<b>dining</b>	3.21m x 2.75m (10' 6" x 9' 0")	<b>powder room</b>	1.55m x 1.12m (5' 1" x 3' 8")
<b>living room</b>	3.27m x 4.06m (10' 7" x 13' 3")	<b>housekeeper's corner</b>	2.05m x 1.75m (6' 8" x 5' 8")



first floor

<b>master suite</b>	3.33m x 4.11m (10' 9" x 13' 4")	<b>bedroom 2</b>	2.57m x 3.65m (8' 4" x 11' 9")
<b>ensuite</b>	2.27m x 1.41m max (7' 5" x 4' 7" max)	<b>bedroom 3</b>	2.57m x 3.20m (8' 4" x 10' 4")
<b>walk-in wardrobe</b>	2.20m x 1.50m (7' 2" x 4' 11")	<b>bedroom 4</b>	3.18m x 2.49m (10' 4" x 8' 1")
		<b>bathroom</b>	2.32m x 1.70m (7' 7" x 5' 6")

ST Storage P Pantry A Appliance CYL Air source heat cylinder  
Plot 5.

\*Available as an upgrade.  
For illustrative purposes only. Specifications & layouts correct at time of print and are subject to change.